

Technical sheet :

# **280 TJ**

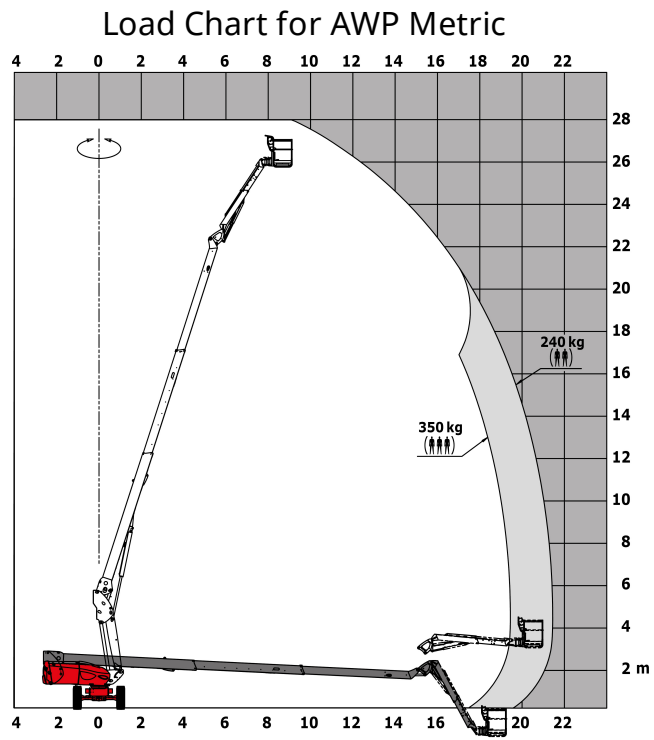
---



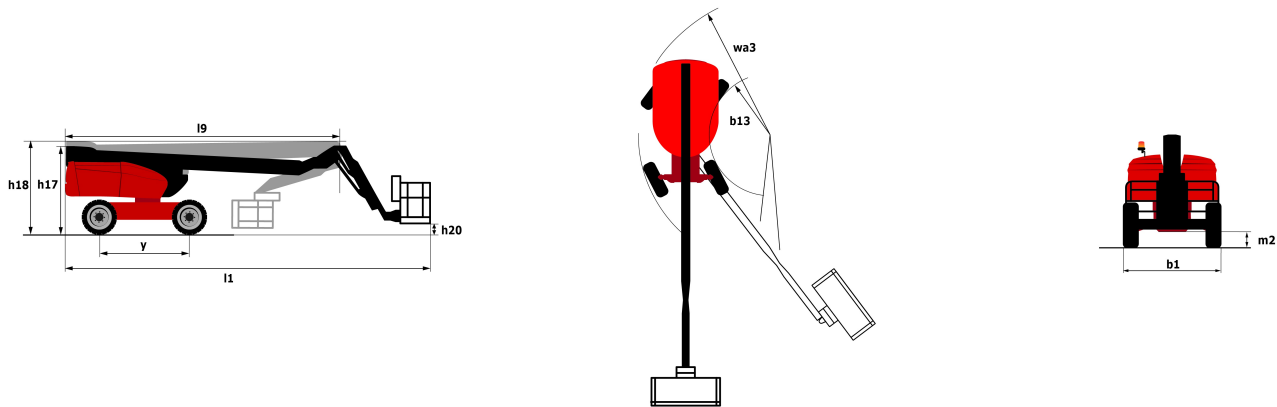
Capacities		Metric	Imperial
Working height	h21	27.75 m	91 ft 1 in
Platform height*	h7	25.75 m	84 ft 6 in
Max. outreach	l4	21.45 m	70 ft 4 in
Pendular arm rotation (bottom)		-62 °	-62 °
Platform capacity / capacity (maximum)	Q	240 kg / 350 kg	529 lbs / 772 lbs
Turret rotation		360 °	360 °
Platform rotation (right / left)		90 ° / 90 °	90 ° / 90 °
Number of people (inside / outside)		3 / 2	3 / 2
Weight and dimensions			
Platform weight*		16550 kg	36487 lbs
Platform dimensions (length x width)	lp / ep	2.3 m x 0.9 m	7 ft 7 in x 2 ft 11 in
Overall width	b1	2.48 m	8 ft 2 in
Overall length	l1	11.36 m	37 ft 3 in
Overall height	h17	2.73 m	8 ft 11 in
Overall length (stowed)	l9	8.09 m	26 ft 7 in
Overall height (stowed)	h18	2.71 m	8 ft 11 in
Floor height (access)	h20	0.48 m	1 ft 7 in
Counterweight offset (turret at 90°)	a7	1.42 m	4 ft 8 in
Internal turning radius (over tyres)	b13	1.75 m	5 ft 9 in
Outer turning radius	Wa3	7.24 m	23 ft 9 in
Ground clearance at centre of wheelbase	m2	0.41 m	1 ft 4 in
Wheelbase	y	2.8 m	9 ft 2 in
Performances			
Drive speed - stowed		4.7 km/h	2.9 mph
Drive speed - raised		0.8 km/h	0.5 mph
Gradeability		34.5 %	34.5 %
Permissible leveling		4 °	4 °
Wheels			
Tyres type		Solid Tyres Cured-On	Solid Tyres Cured-On
Drive wheels (front / rear)		2 / 2	2 / 2
Steering wheels (front / rear)		2 / 2	2 / 2
Braking wheels (front / rear)		2 / 2	2 / 2
Engine			
Engine brand / model / norm		Kubota - V2403-M - Stage 3A	Kubota - V2403-M - Stage 3A
I.C. Engine power rating / Power (kW)		46 Hp / 34.1 kW	46 Hp / 34.1 kW
Miscellaneous			
Ground Pressure		22.25 daN/cm <sup>2</sup>	22.25 daN/cm <sup>2</sup>
Hydraulic Pressure		250 Bar	17 PSI
Hydraulic tank capacity		94 l	20.68 gal
Fuel tank		72 l	15.84 gal
Vibration on hands/arms		0.5 Nm	1.64 ft/s
Daily consumption **		10.81 l	2.38 gal
Standards compliance			
This machine is in compliance with:		European directives: 2006/42/EC- Machinery (revised EN280:2013) - 2004/108/EC (EMC) - 2006/95/EC (Low voltage)	European directives: 2006/42/EC- Machinery (revised EN280:2013) - 2004/108/EC (EMC) - 2006/95/EC (Low voltage)

\*\* According to "REDUCE cycle"

# Load chart



## Dimensional drawing



## Equipment

### Standard

- 230V Predisposition
- 4 simultaneous movements
- 4 wheel drive
- 4 wheel steer with crab mode
- Active oscillating front axle
- Audible alarm and illuminated indicator lamp (leveling, overload, lowering)
- Backup electrical pump
- Basket 2,300 mm
- CAN bus technology
- Continuous turret rotation
- Dead man pedal
- Differential locking on rear axle
- Emergency stop button in platform and on frame
- Engine on swivel chair
- Front axle with limited slip
- Fuel gauge with low level indicator
- Horn in the platform
- Hour meter
- Large basket with three entries

### Optional

- Additional storage boxes
- Air predisposition
- Basket 1,800 mm
- Beep on every movement
- Beep upon travel
- Catalytic cleaner
- Coded anti-start
- Extreme cold oil
- Initial verification report before putting into service
- Lockable fuel cap
- Non-marking tyres
- Onboard generator (3,5 or 5 kW)

Optional

Personalized paintwork

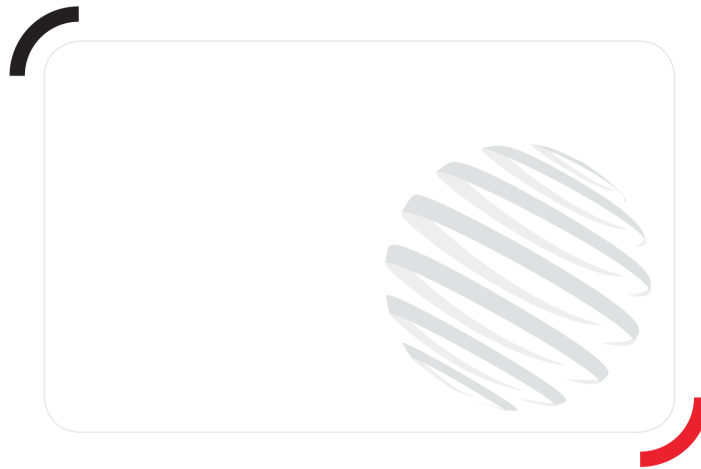
SMS : Safe Man System

Safety harness

Screen protection on the lower box control

Water heater

Working light



Siège Social  
430 rue de l'Aubinière - 44150 Ancenis Cedex - France  
Tel: +33(0)2 40 09 10 11 - Fax: +33 (0)2 40 09 10 97  
[www.manitou.com](http://www.manitou.com)



This brochure describes versions and configuration options for Manitou products which may be fitted with different equipment. The equipment described in this brochure may be standard, optional or not available depending on version. Manitou reserves the right to change the specifications shown and described at any time and without prior warning. The manufacturer is not liable for the specifications given. For more information, contact your Manitou dealer. Non-contractual document. Product descriptions may differ from actual products. List of specifications is not comprehensive. The logos and visual identity of the company are the property of Manitou and may not be used without authorisation. All rights reserved. The photos and diagrams contained in this brochure are provided for information only.

MANITOU BF SA - Limited company with board of directors - Share capital: 39,547,824 euros - 857 802 508  
RCS Nantes