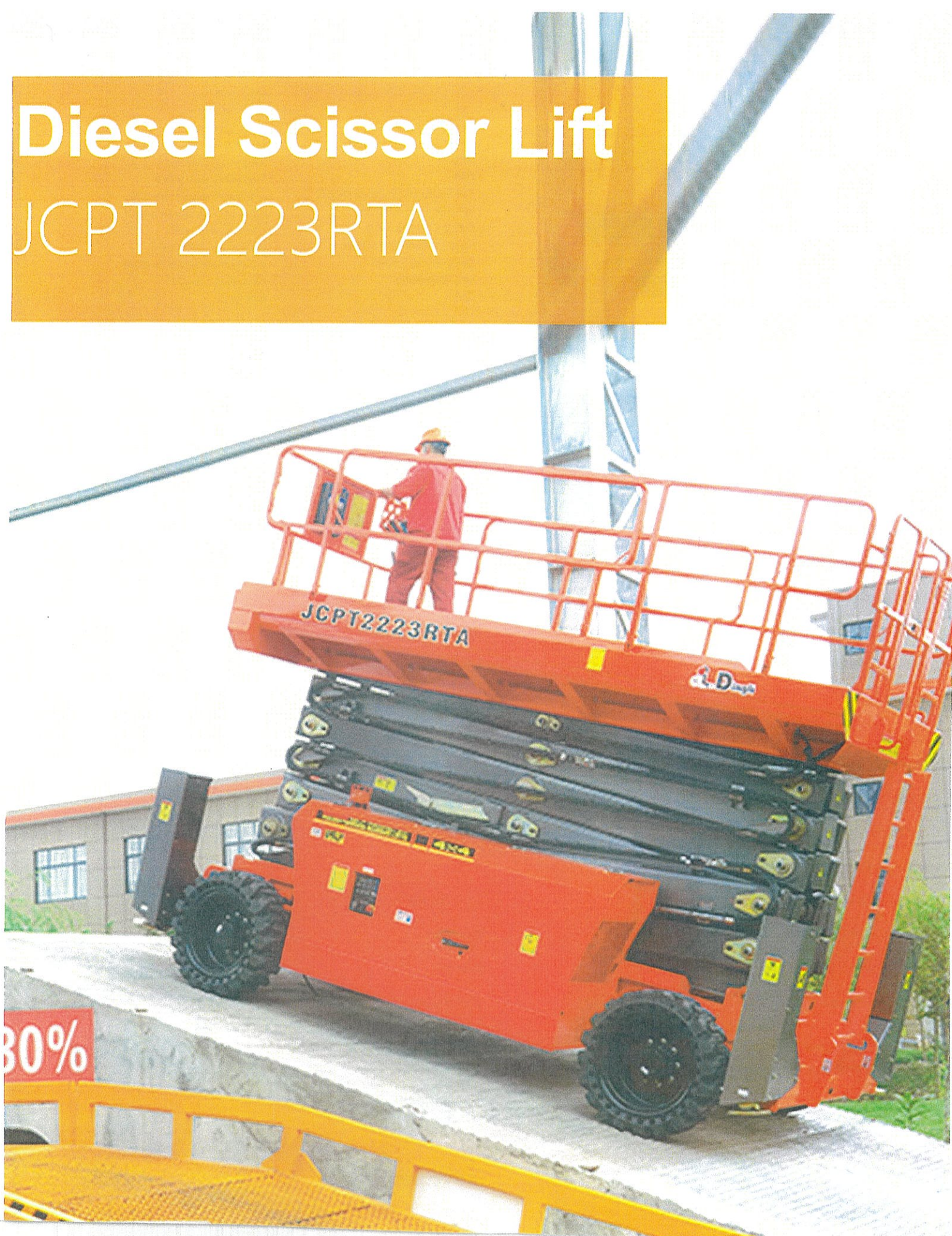


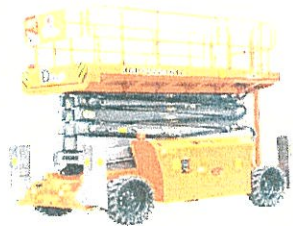
# Diesel Scissor Lift

JCPT 2223RTA





# Diesel Scissor Lift JCPT 2223RTA



## Standard equipment

- Proportional Controls
- Self-lock Gate On Platform
- 4WD
- 4WS
- Self-leveling hydraulic outriggers
- Automatic brake system
- Cylinder holding valve
- Onboard diagnostic system
- Tilt sensor with alarm
- All motion alarm
- Horn
- Hour meter
- Safety brackets
- Folding guardrails
- Flashing beacon
- Slide-out engine tray
- Emergency stop button
- Anti-restart engine protection
- European III emission engine
- Hydraulic oil cooler
- Vertical lift maintenance
- Automatic single roll out deck
- Oscillating Chassis
- Axle Drive

## Size

Model	JCPT2223RTA
Max. Working Height	22.00m
Max. Platform Floor Height	20.00m
Overall Length	4..90m
Overall Width	2.33m
Overall Height(rails up)	3.75m
Overall Height(rails down)	2.91m
Platform Size(length/with)	4.35 x 1.85m
Platform Extension Size	2.00m
Ground Clearance	0.30m
Wheel Base	3.13m

## Performance

Model	JCPT2223RTA
S.W.L	750kg
S.W.L On Extension	500kg
Maximum Workers Number	4
Turning Radius(Inside/Outside)	2.10m/4.60m
Travel Speed(Stowed)	6.0km/h
Travel Speed(Raised)	0.5km/h
Up/Down Speed	75/110sec
Gradeability	30%
Maximum Working Slope	2°/3°
Tyre	355/55D625

## Weight

Model	JCPT2223RTA
Gross Weight	13000kg