

Dingli Scissor Lifts Product Manuals



ZHEJIANG DINGLI MACHINERY CO., LTD.

Add: No. 1255 Baiyun South Road, Deqing, Zhejiang
P.C: 313219
Tel: +86-572-8681688
Fax: +86-572-8681690
E-Mail: export@cndingli.com

[Http://www.cndingli.com](http://www.cndingli.com)

As the technology is constantly updated, technical parameters are subject to change without notice. This manual is for reference only.
The copyright is owned by Zhejiang Dingli. No content may be copied or plagiarize for any purpose without written permission.
January 2020 edition



WeChat

DINGLI[®]
Exceed · New Height



Facility Four



▲ Facility Three



▲ Facility One



▲ Facility Two

Zhejiang Dingli Machinery Co., Ltd. was founded in 2005, headquartered in Deqing, Zhejiang. It is dedicated to developing, manufacturing, selling and servicing various high end aerial working platforms. Dingli is known for its advanced technology, top grade equipped facilities and fast company growth. We are also one of the leading aerial working platform manufacturers in China and the A-share Listed Companies in Shanghai Stock Exchange (Stock code: 603338).The company covers an area of nearly 700 acres, with a building area of 350,000 square meters.

Zhejiang Dingli has assembled a team of engineers and talented professionals, and co-founded a R&D center in Europe and a provincial level developmental institute. We acquired nearly 230 patents over time, including nearly 70 invention patents and nearly 30 overseas patents , 5 computer software copyright registration certificates. The first electric control system used for intelligent aerial working platform was developed by Dingli. Using its top-notch production equipments, we built more than 80 specifications and 6 series of aerial working platforms with high efficiencies and superior performance. In addition, we provide safe and efficient operating systems and solutions for our clients. Our products are widely utilized in construction, commercial and industrial purposes and extended to national defense and military fields, with related certifications obtained. In addition, we have acquired the National Weaponry R&D Manufacturing Enterprise Confidentiality Certificate, Equipment Manufacturing Enterprise Certificate and Weaponry Quality System Certificate. Our products are also certified by CE standards via Germany TUV in Europe, ANSI standards in the U.S., AS/NZS1418 standards in Australia, CU-TR standards in Russia, KC standards in South Korea. Our products are sold to customers in over 80 countries and regions such as Europe, Americas, Asia and Africa.

Zhejiang Dingli practices green growth and has established a remanufacturing facility, advocates recycling energy-efficient and efficient use, and upgrades the warranty period of electric-driven scissor series products and boom lifts series products to 2 years. Zhejiang Dingli is also keen on social welfare and serves the G20 Hangzhou Summit, which highlights the Chinese national sentiment.

Zhejiang Dingli upholds the mission and pursue of "Dingli, based in China and embraces the world" and continues to thrive. We were recognized as the National Key Supported High-Tech Enterprise, Patent Demonstration Enterprise and Standard Innovation Enterprise. It was received the international award for "IPAF-2018 Powered Access Pioneer ".Acquired the top 10 global high-altitude platform equipment manufacturers in 2019, and the best listed company in 2018;of the Top 100 Fast Growing Enterprises in Zhejiang;The production have been recognized as Zhejiang Famous Brand Products, Zhejiang Export Famous Brands, Zhejiang High-tech Products, etc. The "Dingli" trademark has been awarded the title of "China Famous Brand".Mr. Xu Shu Gen, president of the board, was recognized as one of the Top 100 Most Influential Individuals in National Engineer and Machinery Industry for many years.

Zhejiang Dingli established a wholly-owned, first domestically financed leasing pilot enterprise, Shanghai Dingce Leasing Co., Ltd., in Shanghai Free Trade Zone,invested in Magni, a global leading enterprise for intelligent flexible arm fork loading, and American CMEC. Through overseas market layout and technology globalization, the company has effectively improved brand value and expanded sales channels.

Looking at the future, we dedicates ourselves to excellence and ingenuity, and with the promotion of the national "the Belt and Road" measures, Zhejiang Dingli is striving to follow the new model of industry 4.0, striving for excellence, ingenuity and wisdom, relying on scientific and technological research and development, guaranteed by innovative products, and based on passionate services to continuously improve core competitiveness and achieve new leap-forward.

Rough-terrain Scissor Lifts

14m-22m



One-key Extended Platform
(Apply to JCPT2223)



4WS
(Apply to JCPT2223)



Strong Power



Self-leveling Hydraulic Outriggers

Model: JCPT2223DC/RTB - JCPT1823RT - JCPT1523RT - JCPT1418DC/RT - JCPT1218DC/RT

The rough-terrain scissor lift series is divided into two categories: engine drive and electric drive., which maximum working height 12 ~ 22 meters, maximum load of 750 kg, have great height, large load, strong power, large platform size and other advantages, can be competent for worse conditions, in order to satisfy the demands of indoor and outdoor various assignments.

In addition to all the advantages of engine drive types, in view of the pure electric design, the equipment also takes into account the environmental advantages of noiseless, zero emission and so on. It is suitable for the operation environment with high environmental requirements, such as SGCC, nuclear power plant, SINOPEC, CNPC, residential area, airport, tunnel, etc.

Standard Equipment

Proportional Controls / Self-lock Gate On Platform / 4WD / 4WS / Self-leveling Hydraulic Outriggers / Automatic Brake System / Slide-out Engine Tray / Emergency Stop Button / Cylinder Holding Valve / Onboard Diagnostic System / Tilt Sensor With Alarm / Anti-restart Engine Protection / All Motion Alarm / Horn / Hour Meter / Safety Bracket / Folding Guardrails / Automatic Unidirectional Extended Platform / Flashing Beacon / Hydraulic Oil Cooler

Options

Overload Sensor With Sensor / Hydraulic Generator / Hydraulic Welder / Hydraulic Air Compressor / Hydraulic Water Pump / AC power To Platform / Platform Work Lights / Non Marking Tyre

| Model | JCPT2223 | |
|---|-----------|------------|
| Drive Type ■ =Electric ■ =Engine | DC | RTB |

| Size | | |
|--------------------------------|-------------|-------------|
| MAX.Working Height | 22.00m | 22.00m |
| MAX.Platform Floor Height | 20.00m | 20.00m |
| Overall Length | 4.95m | 4.95m |
| Overall Width | 2.46m | 2.46m |
| Overall Height(Rails Up) | 3.86m | 3.86m |
| Overall Height(Rails Down) | 3.00m | 3.00m |
| Platform Size(Length/Width) | 4.59×2.25m | 4.59×2.25m |
| Platform Extension Size | 2.70m | 2.70m |
| Ground Clearance | 0.40m | 0.40m |
| Wheelbase | 3.30m | 3.30m |
| Turning Radius(Inside/Outside) | 1.25m/3.40m | 1.25m/3.40m |
| Tyre Size | 36×14-20 | 36×14-20 |

| Performance | | |
|-----------------------|-----------|-----------|
| Capacity | 750kg | 750kg |
| Capacity On Extension | 750kg | 750kg |
| Max.Occupants | 4 | 4 |
| Gradeability | 30% | 30% |
| Travel Speed(Stowed) | 5.0km/h | 4.5km/h |
| Travel Speed(Raised) | 0.4km/h | 0.4km/h |
| MAX. Working Slope | 2°/3° | 2°/3° |
| Up/Down Speed | 90/100sec | 90/100sec |

| Weight | | |
|----------------|---------|---------|
| Overall Weight | 13400kg | 13000kg |

| Power | | |
|----------------------|----------------|----------------|
| Engine DEUTZ D2.9 L4 | / | 36.4kW/2600rpm |
| Diesel Tank | / | 100L |
| Hydraulic Tank | 150L | 150L |
| Batteries | 48V/630Ah | / |
| Integrated Charger | 48V/60A | / |
| Drive Motor | 4×AC 32V/3.3kW | / |
| Lifting Motor | 2×DC 48V/8.0kW | / |

Electric Drive Scissor Lifts

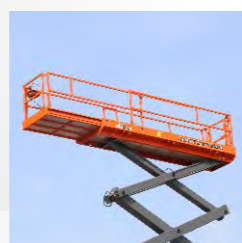
22m



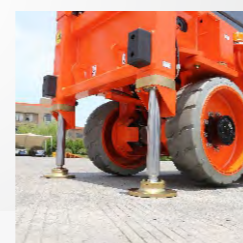
4WS



Great Passability



Ultra-long Platform



Self-leveling Hydraulic Outriggers

Model: JCPT2212DC

The maximum working height is 22m, the heavy load at full height is 600kg, the whole machine adopts pure electric drive, has 4WS&4WD ability, turning radius is 0.5m/2.5m, can be crab-steering. In addition, the JCPT2212DC is equipped with a 4.3m×1.19m working platform and a 1.8m long extended platform, with a wider operating range.

Different from the 22m JCPT2223DC, JCPT2212DC width is only 1.25m, with excellent passability, can easily go through the narrow doorframes, channels, etc. In view of pure electric drive, JCPT2212DC has no pollution, zero emission, energy saving and environmental protection, suitable for indoor and outdoor working environment with high environmental requirements.

Standard Equipment

Proportional controls / Automatic pothole protection / Self-lock gate on platform / Automatic leveling hydraulic outriggers / Non marking tyre / 2WD / Automatic brakes system / Emergency stop button / Emergency lowering system / Cylinder holding valve / Onboard diagnostic system / Tilt sensor with alarm / All Motion Alarm / Horn / Hour meter / Safety brackets / Folding guardrails / Extended platform / Charger protection / Flashing beacon

Options

Overload sensor with alarm / AC power on the platform / Platform work lights / Airline to the platform

| | |
|--|-----------|
| Model | JCPT2212 |
| Drive Type ■ =Electric ■ =Engine | DC |

| Size | |
|--------------------------------|------------|
| MAX.Working Height | 22.00m |
| MAX.Platform Floor Height | 20.00m |
| Overall Length | 4.72m |
| Overall Width | 1.25m |
| Overall Height(Rails Up) | 3.82m |
| Overall Height(Rails Down) | 2.99m |
| Platform Size(Length/Width) | 4.30×1.19m |
| Platform Extension Size | 1.80m |
| Ground Clearance | 0.20m |
| Wheelbase | 3.18m |
| Turning Radius(Inside/Outside) | 0.5m/2.5m |
| Tyre Size | 28×10-22 |

| Performance | |
|-----------------------|-----------|
| Capacity | 600kg |
| Capacity On Extension | 600kg |
| Max.Occupants | 2 |
| Gradeability | 25% |
| Travel Speed(Stowed) | 3.0km/h |
| Travel Speed(Raised) | 0.5km/h |
| MAX. Working Slope | 1°(0°) |
| Up/Down Speed | 80/100sec |

| Weight | |
|----------------|---------|
| Overall Weight | 12350kg |

| Power | |
|--------------------|----------------|
| Hydraulic Tank | 130L |
| Batteries | 48V/630Ah |
| Integrated Charger | 48V/60A |
| Drive Motor | 4×AC 32V/3.3kW |
| Lifting Motor | 2×DC 48V/8.0kW |